



33 HORSFORTH MILL

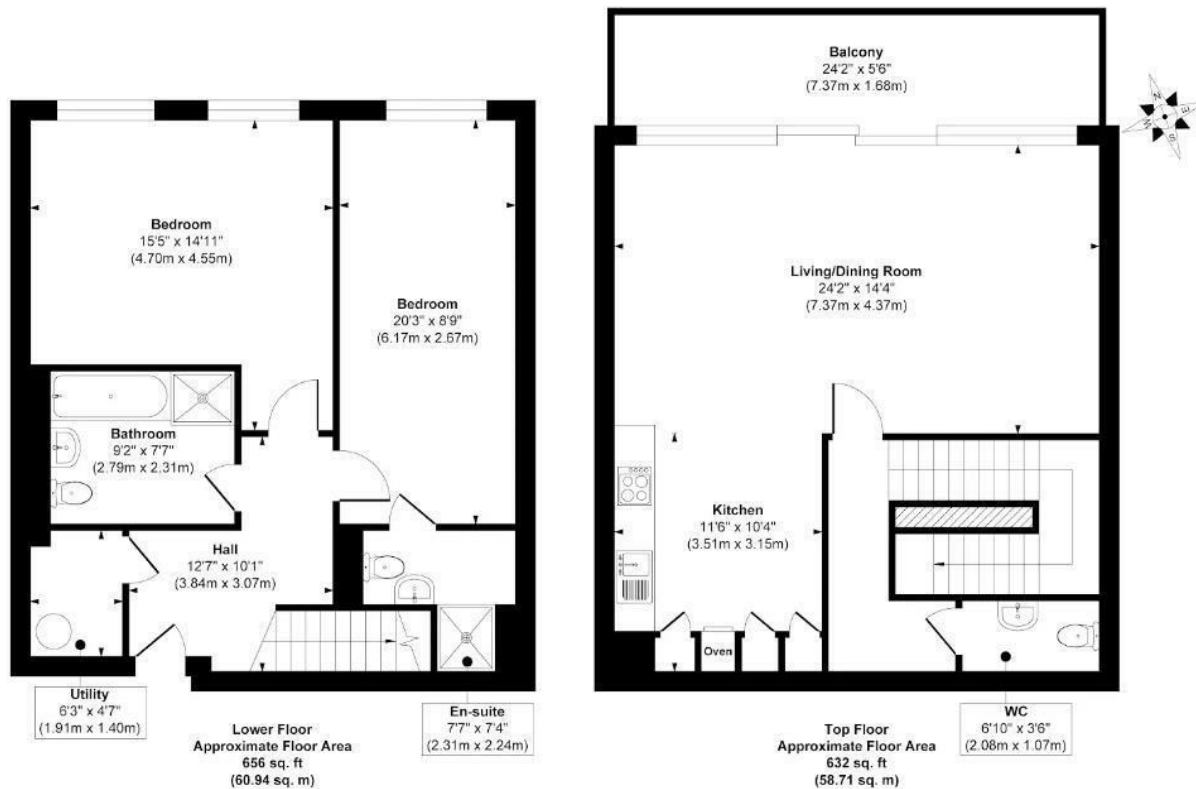
LEEDS, LS18 4GS

£1,900 PER MONTH

Welcome to this stunning 2-bedroom, 2-bathroom apartment in Horsforth Mill, featuring modern design, a private balcony and complete with parking! Ideal for young professionals or downsizers ; Book a viewing today!

MONROE

SELLERS OF THE FINEST HOMES



Approx. Gross Internal Floor Area 1288 sq. ft / 119.65 sq. m
Illustration for identification purposes only, measurements are approximate, not to scale.
Copyright © Show Home



Energy Efficiency Rating		
	Current	Potential
Very energy efficient - lower running costs		
(92 plus) A		
(81-91) B		
(69-80) C		
(55-68) D		
(39-54) E	53	53
(21-38) F		
(1-20) G		
Not energy efficient - higher running costs		
England & Wales	EU Directive 2002/91/EC	

Agents Note: Whilst every care has been taken to prepare these particulars, they are for guidance purposes only. All measurements are approximate and are for general guidance purposes only and whilst every care has been taken to ensure their accuracy, they should not be relied upon and potential buyers/tenants are advised to recheck the measurements

Monroe Lettings and Property
Management
Whitehall Road
Leeds
LS12 1FJ

0113 350 0866
hello@monroelettings.com
www.monroelettings.com

MONROE

SELLERS OF THE FINEST HOMES